

FROM THE EXPERTS

WHAT ACTUALLY IS MUNICIPAL ENGINEERING

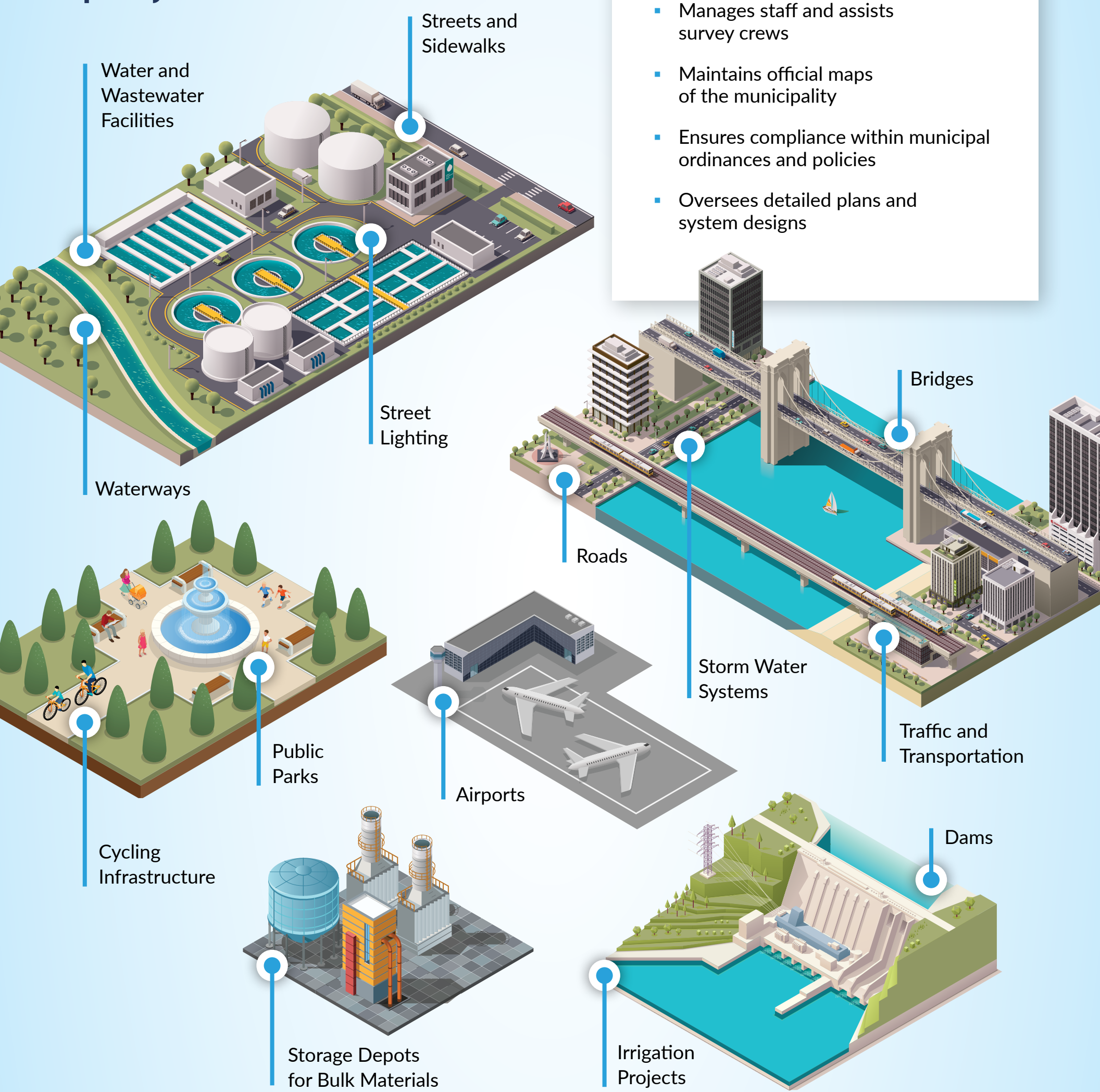
START HERE

The question "What is municipal engineering?" is a common one. The function falls under the broad category of civil engineering yet handles the design, construction and maintenance of infrastructures such as building structures and facilities. The infrastructures are typically within the jurisdiction of a municipality, such as a township, borough or city. Beyond consulting, administration and inspection, a municipal engineer wears many hats.

ROLES & RESPONSIBILITIES

- Pursues federal, state and local funding for projects
- Develops and manages budgets for engineering services
- Plans and supervises design of public works projects
- Oversees master plans and information on streets and flood control
- Manages staff and assists survey crews
- Maintains official maps of the municipality
- Ensures compliance within municipal ordinances and policies
- Oversees detailed plans and system designs

MUNICIPAL PROJECT SITES



MOST COMMON SERVICES

WATER AND WASTEWATER

- Treatment Plants
- Conveyance
- Pump Stations
- Tanks

STRUCTURAL

- Bridges
- Buildings

TRAFFIC AND TRANSPORTATION

- Design
- Signalization
- Permitting

CONSTRUCTION MANAGEMENT

- Inspection
- Scheduling

There are **9,471 combined sewer outfalls** in 32 states, 1,569 of which are in Pennsylvania—the most in any state across the U.S.¹

Of the 6,657 bridges in New Jersey, **8.7% are classified as "Structurally Deficient,"** which means the bridge requires significant maintenance, rehabilitation or replacement¹

There are **120,091 miles of public roads** in Pennsylvania, with 32% in poor condition¹

Approximately **75% of New Jersey's park facilities** sustained damage from Superstorm Sandy including serious damage to two of the State's most visited parks¹